

# Live CME Program

19<sup>th</sup> Annual

## Cardiology in the Valley Symposium

CME Hours: 4

Cardiovascular Risk Factors in Primary and High Risk Secondary Prevention

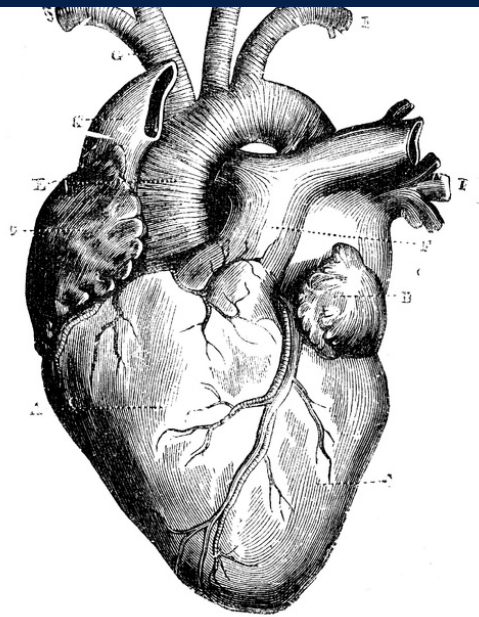
**Saturday, May 18, 2024**  
**8 am to 1 pm**

Live at UCSF Fresno

**Physicians: \$75**  
**Non-Physicians: \$40**  
Free for Residents and Fellows

**Course Director:**

John A. Ambrose, MD, FACC - Professor of Medicine, UCSF



**UCSF** Fresno

Join the UCSF Fresno Division of Cardiology, live at UCSF Fresno or via Zoom webinar, for the 19th installment of Cardiology in the Valley. The 2024 symposium will provide attendees with the most up-to-date information on cardiovascular management to reduce morbidity and mortality in patients in the San Joaquin Valley. Topics will include High Blood Pressure, Cigarette Smoking and Vaping, Diabetes Pathophysiology and Management, and Case Studies with an Emphasis on Lipid Management. Attend in-person or via Zoom webinar.

### TOPICS AND SPEAKERS

**High Blood Pressure**

Ryan Berg, MD, Clinical Professor of Medicine, UCSF Fresno

**Cigarette Smoking and Vaping**

John A. Ambrose, MD, FACC, Professor of Medicine, UCSF Fresno

**Diabetes Pathophysiology and Management**

Prakash Deedwania, MD, FACC, Clinical Professor of Medicine, UCSF Fresno

**Case Studies with an Emphasis on Lipid Management**

Teresa Daniele, MD, FACC, Clinical Professor of Medicine, UCSF Fresno

### OBJECTIVES

1. To understand the importance of control of major cardiovascular risk factors to adverse cardiovascular events
2. To review optimum treatment levels for blood pressure, cholesterol, and diabetic control, to reduce the risk of serious cardiovascular events
3. To discuss established and investigational drug therapies as well as non-drug interventions to manage cardiovascular risk

### ACCREDITATION

This activity has been planned and implemented in accordance with the accreditation requirements and policies of the California Medical Association (CMA) through the joint providership of Community Medical Centers and UCSF Fresno. Community Medical Centers accredited by the CMA to provide continuing medical education for physicians. Community Medical Centers designates this live activity for a maximum of 4 AMA PRA Category 1 Credit(s)<sup>™</sup>. Physicians should claim only the credit commensurate with the extent of their participation in the activity.

### TARGET AUDIENCE

Cardiologists and all health care personnel including hospitalists, family and internal medicine physicians, nurses, physician assistants, nurse practitioners, Cardiac Technologists, etc., with an interest in recent advances in cardiovascular disease.

### REGISTRATION

Physician Registration: \$75  
Non-Physician Registration: \$40  
Student/Resident Registration: FREE  
<https://www.eeds.com/live/518023>



559.499.6406



Fresno-CME@UCSF.edu



[www.fresno.ucsf.edu](http://www.fresno.ucsf.edu)